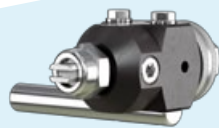


PRODUCT OVERVIEW





About us

We are a German manufacturer of devices and systems for coating surfaces.

For more than 120 years, we have been making our mark with innovative products in surface technology. We manufacture and test many of our products ourselves at our headquarters in Eltville am Rhein (near Wiesbaden). New product and system solutions are developed within our in-house research and development department. We thus remain "Made in Germany" to this day. This approach is our philosophy and a cornerstone of our customer satisfaction.

With approximately 80 employees, we offer system solutions consisting of spray guns, painting systems, material containers, lifting devices, pumps, controllers/fittings, ventilation technology, accessories, and service.



We simulate and evaluate customer-specific applications in our technical centre. Our in-house design team uses these results to develop sustainable economic and ecological solutions for customers. This process yields a system solution that is optimally tailored to the customer.

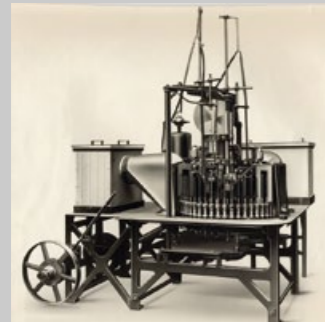
Our experience, which spans more than 120 years, is the basis of our extensive expertise.

We gladly take on your challenges – Krautzberger is your partner for surface technology.



Contents

- 04 History
- 05  XLINE
PERFECTION | QUALITY | PERFORMANCE
- 06 Spray guns
- 12 XLINE accessories:
Spray guns
- 14 Fluid pressure regulators
- 15  BasicLINE
CLASSIC | PRACTICAL | SMART
- 16 Spray guns
- 20 Painting systems
- 22 Purpose-built systems
- 24 Material containers
- 26 Lifting devices
- 27 Pumps
- 29 Fluid pressure regulators
Fluid back pressure regulators
- 30 Ventilation technology
- 32 BasicLINE accessories:
Spray guns
- 34 General accessories



Krautzberger is a name with tradition and innovation behind it

Krautzberger is a name with tradition and innovation behind it – the innovation of the spray gun 120 years ago and the Hermes Award in 2011. We use our leadership position to set new standards for our customers.

Albert Krautzberger from Friedland near Breslau filed a patent application for a “painting device operated by compressed air” on 9 October 1902. With that he laid the foundation of today’s Krautzberger GmbH. Albert Krautzberger’s invention made it possible to achieve a significant simplification in the day-to-day use of the devices through the inevitable connection of air and paint discharge. Even today, the vast majority of compressed air guns work with the system invented by Albert Krautzberger.

Series production began as far back as 1903. A few years later, the production site was moved to Holzhausen near Leipzig. This remained the production site until World War II. This was followed by expropriation and the family then moved to Eltville in the Rheingau. There, the company was rebuilt with just a few employees and quickly regained its footing in the market.

During the re-privatisation period following the reunification of Germany, Krautzberger GmbH purchased its old headquarters in Holzhausen and saved the site from being auctioned off. Krautzberger GmbH has been a family-owned business from the start and is currently managed by the 4th generation.

In 2011, Krautzberger received the Hermes Award, an international technology award. Today, Krautzberger GmbH is a medium-sized family business with 80 employees and customers all over the world and is one of the leading industrial companies specialising in surface technology.



120+ years of experience

As a result of our history, Krautzberger GmbH offers you first-class expertise in many sectors and for many fields of application

Flexible and reliable

As a family business that has been around for generations, we stand out through customer proximity, flexibility, transparency and rapid problem solving.

“Made in Germany“



With Krautzberger, you benefit from over 120 years of experience in surface technology, a wide range of products and unique quality Krautzberger products.

Our
XLINE

PERFECTION, QUALITY, PERFORMANCE

Our XLINE combines a multitude of detailed features with a state-of-the-art production process. Due to additional requirements arising from the continued automation of spraying processes, we have the right solution for you in our manual and automatic range.

We distinguish between the Krautzberger KG24, KG38, and M16 x 1 threads for our XLINE manual and automatic spray guns.



KG38



A 16

- Integrated preliminary air control
- XLINE nozzle system KG38
- Round jet air and flat jet air independently adjustable
- Highly robust, durable, and long service lives

Find out more



KG38



A 16 HVLP

- Integrated preliminary air control
- XLINE HVLP nozzle system KG38
- Round jet air and flat jet air independently adjustable
- Highly robust, durable, and long service lives

Find out more



KG38



RA 6

- Robot spray gun
- Externally controlled round jet and flat jet air
- XLINE nozzle system KG38
- Quick-change adapter
- Long service lives, very easy maintenance

Find out more



KG38



RA 6 HVLP

- Robot spray gun
- Externally controlled round jet and flat jet air
- XLINE HVLP nozzle system KG38
- Quick-change adapter
- Long service lives, very easy maintenance

Find out more



KG38



A 20

- Integrated preliminary air control
- XLINE nozzle system KG38
- Adjustable round jet and flat jet air in quick-change adapter
- Versatile, long service lives

Find out more



KG38



A 20 HVLP

- Integrated preliminary air control
- XLINE HVLP nozzle system KG38
- Adjustable round jet and flat jet air in quick-change adapter
- Versatile, long service lives

Find out more



KG24



M 18

- More compact, more powerful automatic spray gun
- Round jet air and flat jet air independently adjustable
- XLINE nozzle system KG24
- Very easy to maintain

Find out more



KG24

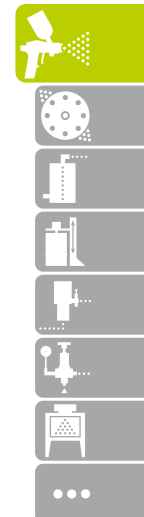


M 18 HVLP

- More compact, more powerful automatic spray gun
- Round jet air and flat jet air independently adjustable
- XLINE HVLP nozzle system KG24
- Very easy to maintain

Find out more





KG24



RMA 1

- Robot spray gun, compact design
- Externally controlled round jet and flat jet air
- XLINE nozzle system KG24
- Quick-change adapter
- Long service lives, very easy maintenance

[Find out more](#)



KG24



MC 2

- Needleless automatic spray gun
- Round jet air and flat jet air independently adjustable
- XLINE nozzle system KG24
- Designed for continuous spraying processes
- Material fed via cannula without undercuts

[Find out more](#)



M16 x 1



Mikro XS^{mv}

- Mikro XS solenoid valve variant
- Ultracompact automatic spray gun
- Innovative preliminary and post-air control
- Switching frequency up to 30 Hz
- XLINE nozzle system

[Find out more](#)



KG38



HP 30

- For pressurised media
- Less energy expended on the trigger
- XLINE nozzle system KG38
- Versatile

[Find out more](#)



M16 x 1



Mikro XS

- Ultracompact automatic spray gun
- Innovative preliminary and post-air control
- Switching frequency up to 30 Hz
- Quick and easy maintenance
- XLINE nozzle system

[Find out more](#)



M16 x 1



Mikro XSv

- Mikro XS extension variant
- Ultracompact automatic spray gun
- Innovative preliminary and post-air control
- Optimum switching performance
- XLINE nozzle system

[Find out more](#)



KG38



HP 30 HVLP

- For pressurised media
- Less energy expended on the trigger
- XLINE nozzle system HVLP KG38
- Versatile

[Find out more](#)



KG38

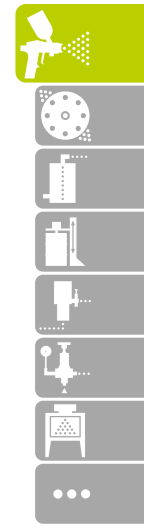


HP 30 2K

- For processing fast-acting 2K media
- Reaction medium sprayed into the spray jet
- XLINE nozzle system KG38

[Find out more](#)





KG38



HS 30

- Gravity flow cup version
- Less energy expended on the trigger
- XLINE nozzle system KG38
- Ultrafine atomisation

[Find out more](#)



KG38



HS 30 HVLP

- Gravity flow cup version
- Less energy expended on the trigger
- XLINE HVLP nozzle system KG38
- Ultrafine atomisation

[Find out more](#)



KG24



Mignnon 4S

- Gravity flow cup version
- Ergonomic design, lightweight
- XLINE nozzle system KG24
- Air connection in the handle
- Removable head section made of aluminium or stainless steel

[Find out more](#)



KG24



Mignnon 4S HVLP

- Gravity flow cup version
- Ergonomic design, lightweight
- XLINE HVLP nozzle system KG24
- Air connection in the handle
- Removable head section made of aluminium or stainless steel

[Find out more](#)



KG24



Mignnon 4P

- For pressurised media
- Ergonomic design, lightweight
- XLINE nozzle system KG24
- Material and air connection in the handle
- Removable head section made of aluminium or stainless steel

[Find out more](#)



KG24

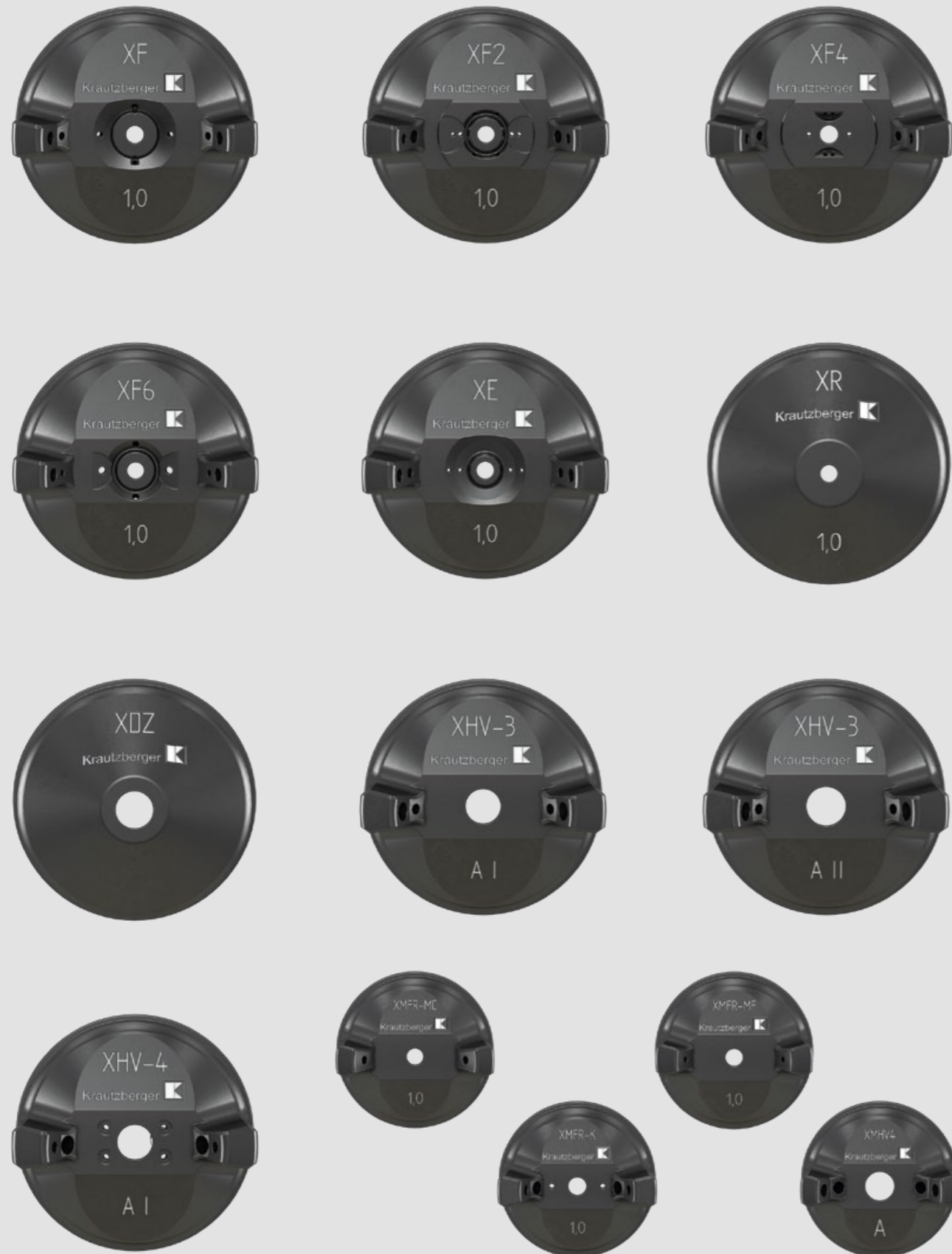


Mignnon 4P HVLP

- For pressurised media
- Ergonomic design, lightweight
- XLINE HVLP nozzle system KG24
- Material and air connection in the handle
- Removable head section made of aluminium or stainless steel

[Find out more](#)





Air nozzles

XLINE air nozzles

We offer our customers a wide range of different XLINE air nozzles.

A variety of spraying methods, geometries, shapes, and diameters allow us to offer the right XLINE air nozzle for every application.

Examples of different jet types include:

- Flat jet atomisation
- Round jet atomisation
- Rotary jet atomisation
- Full-cone rotary jet atomisation
- Hollow-cone rotary jet atomisation

Our XLINE air nozzles are available in anodised aluminium or stainless steel. This variety ensures you have a wide range of air nozzles in the conventional and HVLP sector.

Thanks to our new and state-of-the-art manufacturing process for the XLINE series, we can offer you a number of advantages for your coating process.

Our advantages:

- Optimisation of the air nozzles via numerical flow simulation
- Improved transfer rates thanks to optimisation of interior geometries
- Reduced soiling due to new exterior design
- Automated 100% check integrated in the production process
- Zero-defect strategy to ensure continuous quality improvement
- Improved spray pattern reproducibility
- Functional improvement of the air nozzles
- Optimal centring of the material nozzle and air nozzle by a calotte system
- Improved separation of flat jet and round jet air
- Anodised aluminium as standard, which results in significant weight savings (up to 60%)
- Also available in stainless steel for more stringent requirements, e.g. for use in the food industry or pharmaceutical industry
- Improved handling and easy nozzle alignment
- Trapezoidal thread enables insertion and tightening in one movement
- Easy, precise alignment and fixation of the air nozzle
- Air nozzle fixation in 15° increments



FPR 2

- Three reduction ratios available
- Maximum flow rate: 3.8 l/min
- Highly dynamic compensation of pressure fluctuations
- Optional quick-flush function
- Precise pressure regulation in low pressure ranges
- Easy exchange of the valve cartridge

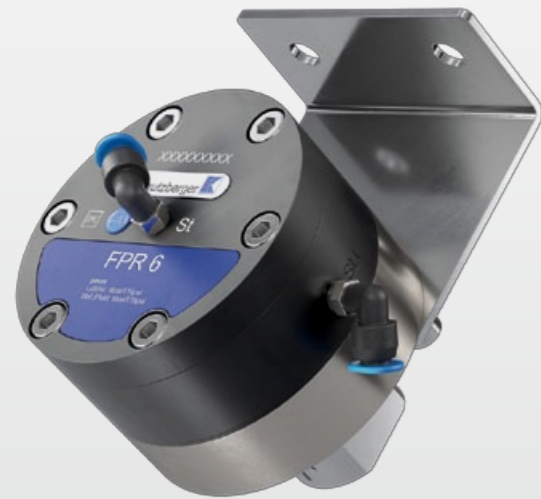
Find out more



FPR 2c

- Calibratable design
- Maximum flow rate: 3.8 l/min
- Three reduction ratios available
- Highly dynamic compensation of pressure fluctuations
- Precise pressure regulation in low pressure ranges
- Easy exchange of the valve cartridge

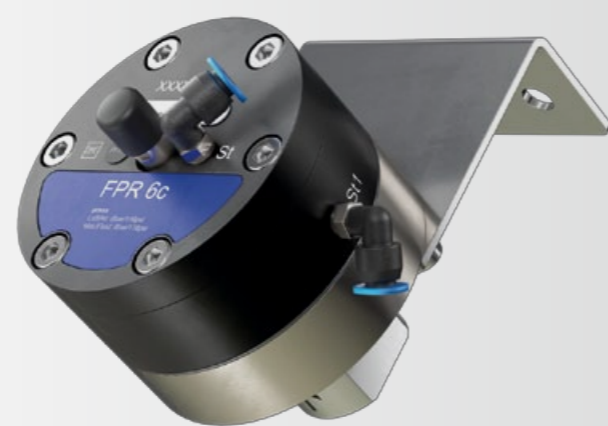
Find out more



FPR 6

- Three reduction ratios available
- Maximum flow rate: 11.1 l/min
- Highly dynamic compensation of pressure fluctuations
- Optional quick-flush function
- Precise pressure regulation in low pressure ranges
- Easy exchange of the valve cartridge

Find out more



FPR 6c

- Calibratable design
- Maximum flow rate: 11.1 l/min
- Three reduction ratios available
- Highly dynamic compensation of pressure fluctuations
- Precise pressure regulation in low pressure ranges
- Easy exchange of the valve cartridge

Find out more



Our BasicLINE

TRADITIONAL, PRACTICAL, SMART

Our BasicLINE combines traditional elements with state-of-the-art technology.

Thanks to our many years of experience, we offer a wide range of products for every application. Due to new process technologies and methods as well as increased demands on our products, all BasicLINE products have evolved and proven themselves in the market over many years.



DUO A 22

- Air-assisted airless automatic spray gun
- Innovative preliminary and post-air control
- XLINE air nozzle system
- Different adapter variants and connections available
- Large air and material channels (5 mm diameter)

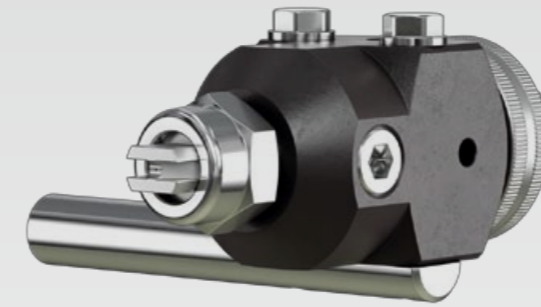
[Find out more](#)



Mikro 3

- Compact design
- Rapid switching times
- Possible to attach a solenoid valve directly to the spray gun
- Suitable for applying small amounts

[Find out more](#)



KAA 1300

- Airless automatic spray gun
- Can be used up to 500 bar
- Compact, easy assembly and maintenance
- Available in aluminium or stainless steel
- Large number of airless nozzles available

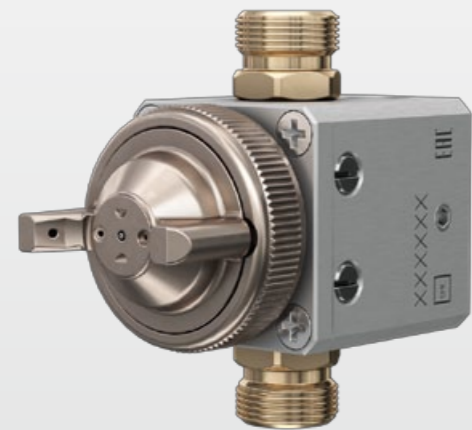
[Find out more](#)



KAA 1300 material squeeze

- Airless automatic spray gun with large cross-sections for viscous media
- Minimal spare parts, short maintenance times
- Available in aluminium or entirely stainless steel
- Large number of airless nozzles available

[Find out more](#)



Automatic glazing gun

- Needleless automatic spray gun
- For processing glazes
- Large cross-sections
- Equipped with circulation connections
- Very easy to maintain

[Find out more](#)



MA 1

- Robot spray gun
- Separate flat and round jet air
- Main element, material nozzle, and needle made of stainless steel
- Compact and small design
- Externally controllable

[Find out more](#)



DUO A 2

- Air-assisted airless automatic spray gun
- Large material and air cross-sections
- Adapter system including air and material connection
- Easy to operate and maintenance-friendly

[Find out more](#)





DA 3 Steam

- Automatic spray gun for steam process
- Suitable for water-based media
- Separate flat and round jet air control
- Extremely high transfer rate with minimal overspray

Find out more



Perfekt 4

- Material connection or gravity flow cup version available
- Highly robust full metal design
- Flat and round jet control
- Various nozzle and jet types available

Find out more



KS 5

- Hand-held spray gun for airless application
- Large number of airless nozzles available
- Suitable for common airless applications
- Equipped with safety bracket and trigger guard
- Robust design

Find out more



KS 5D

- Hand-held spray gun for airless application
- Large number of airless nozzles available
- Suitable for high-viscosity media
- Equipped with safety bracket and trigger guard
- Robust design

Find out more



TFP 1

- Hand-held spray gun release agent
- Hose-in-hose system
- Optional long trigger, very easy to use
- Reaches deep shapes and undercuts
- Suitable for all low pressure applications

Find out more



Dekor

- Airbrush hand-held spray gun
- Ideal for retouching, colouring, and stencilling
- Suitable for small amounts
- Suction and gravity flow cup version available

Find out more



KS 5F

- Hand-held spray gun for airless application
- Material press-out version – with threaded nozzle
- Various extensions available
- Equipped with safety bracket and trigger guard
- Robust design

Find out more



KS 5K

- Hand-held spray gun for airless application
- With cannula thread
- Equipped with safety bracket and trigger guard
- Robust design

Find out more



Find out more



Automatic surface spraying machine KFS 2000

- Coating system for small and medium-sized series
- Small and compact design – saves plenty of space
- Available as a continuous line system
- Large number of spraying programs can be stored
- One-person operation
- Wide range of geometries can be coated
- Additional features such as ionisation, rotatable spraying axis, bracket for multiple spray guns
- Compatible with various Krautzyberger automatic spray guns
- ATEX design available
- Mobile filter carriage
- Easily accessible through side/front doors and windows
- User-friendly operation and easy programming
- Siemens panel and control unit
- Painted steel or stainless steel design
- Complete extraction system can be supplied
- Spray guns can be activated and controlled individually

Find out more



Steam technology

- System for atomising water-based media
- Not suitable for solvent-based media
- Future-oriented procedure with significant cost benefits
- Advantages of the spray gun technology are retained
- Atomisation of the material using water vapour
- Minimal overspray, maximum application efficiency
- Finest atomisation creates a higher gloss factor
- Conventional material supply via pump or pressure container
- Lower residual moisture means significantly shorter drying times
- Homogenous and gentle coating with extremely low medium rebound (less contamination)
- Lower jet pressure reduces noise emissions

Find out more



Rotary machine R 703

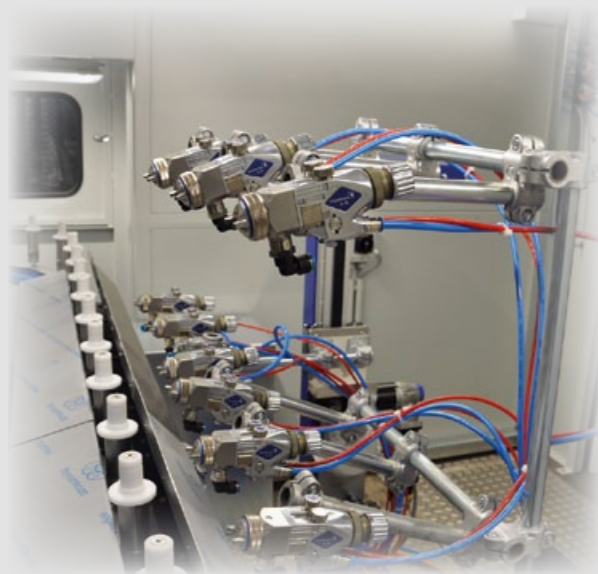
- Suitable for rotationally symmetrical components
- Compact design
- Modern design and software interface
- Developed for small and medium-sized series
- Suitable for exterior and interior coating
- Suitable for water-based and solvent-based lacquers and other media
- Can be parameterised and adjusted via a corded panel
- Available with 4, 6, 8, 12 or 24 spindles
- Half of the selected spindles can be equipped with a reversal of the direction of rotation as an option
- Up to three spraying stations, two of which are available with an optional lifting device
- Built on solvent-resistant castors
- ATEX design optionally available
- Adapted extraction chamber optionally available

Find out more



Painting robot GA 25

- Robot for coating wood, plastic, metal, glaze, and ceramic
- Articulated robot with 6 axes
- Developed for the painting and coating industry
- Highly specific kinematics and software ensure fast and effective work
- Can control 3 interpolated axes in addition to 6 main axes
- ATEX design available
- Self-teaching module available
- Point-to-point programming available
- CAD-based programming available
- Very easy programming of spraying programs
- 900 coating programs can be stored
- Option of connecting to floor or ceiling conveyor



Krautzberger painting systems

The Krautzberger painting systems department offers our customers the opportunity to plan and implement customised coating systems that are tailored to their needs. We conduct advance testing of your application at our technical centre. We collect data, evaluate it, and together we determine the necessary equipment to ensure a successful coating application for you. Our many years of experience in systems engineering means we can draw on a broad portfolio and expertise in this area. From our R 703 rotary machine to our KFS 2000 automatic surface spraying machine, which can be customised, we also offer complete solutions for your coating needs. This can also include topics such as drying, extraction, handling or robotics. Together, we will then address your wishes and discuss feasibility and implementation as part of your enquiry.

In addition to our complete concepts, we also offer integration of spraying technology into existing painting systems. This only includes the pneumatic aspect such as spray guns, material supply, pumps or tubing. We do not make any modifications or conversions to third-party electrical control units you may have. At Krautzberger, we know the challenges and requirements of our customers when it comes to surface technology painting systems. We will be happy to help you with their implementation.

Why opt for Krautzberger coating solutions?

- Large portfolio of systems in the field of surface technology
- Customised design
- Many systems implemented worldwide
- Longstanding expertise of project personnel
- In-house technical centre

Material containers



1 litre / 3 bar MDS

- Small material pressure container - 1 litre
- Made from aluminium
- Up to 3 bar maximum pressure
- Pressure gauge 0-3 bar
- Equipped with mounting bracket

[Find out more](#)



2 litres / 2.5 bar MDM

- Material pressure vessel - 2 litres
- Up to 2.5 bar maximum pressure
- Optional pneumatic agitator
- Optional fill level sensor
- Made of high-quality stainless steel

[Find out more](#)



20 litres / 6 bar MDM

- Material pressure vessel - 20 litres
- 6 bar stainless steel design
- Optional agitator
- Optional fill level sensor
- Various air and material outlets possible

[Find out more](#)



50 litres Hobbock / 6 bar

- Material pressure vessel - 50 litres
- 6 bar galvanised steel design
- Optional agitator
- Optional fill level sensor
- Various air and material outlets possible

[Find out more](#)



5 litres / 6 bar MDM

- Material pressure vessel - 5 litres
- 6 bar stainless steel design
- Optional agitator
- Optional fill level sensor
- Various air and material outlets possible

[Find out more](#)



10 litres / 6 bar MDM

- Material pressure vessel - 10 litres
- 6 bar stainless steel design
- Optional agitator
- Optional fill level sensor
- Various air and material outlets possible

[Find out more](#)



Depressurised material containers

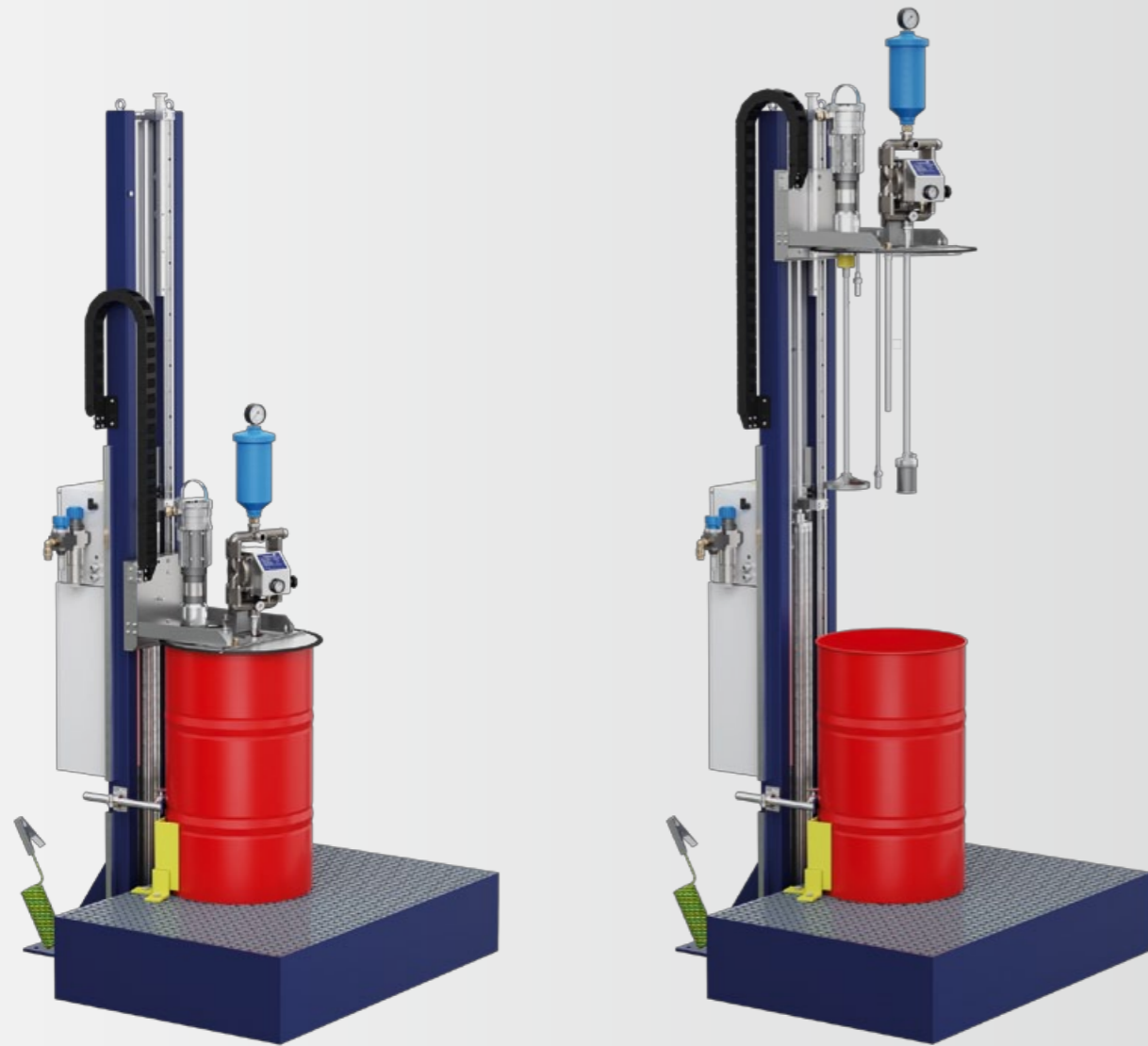
- Depressurised material container
- 25-500 litres available
- Made from stainless steel
- Optional agitator and/or pump
- Fill level monitoring possible

[Find out more](#)



Material containers

Find out more



Pump stroke station

- Pump stroke station for drums and containers
- Various cover sizes available
- Floor anchoring or collecting pan
- ATEX design available
- 2-hand safety control
- Stainless steel cover
- Compressed air or electric agitators available
- Various agitator impellers available
- Fill level measuring optionally available
- Diaphragm pump for material conveyance available in different designs
- Buffer to allow safe container exchange



MP 100

- Diaphragm pump
- Robust, compact design
- Surge tank available
- Option of attaching fluid pressure regulator
- Large valve cross-sections

Find out more



MP 520

- Double diaphragm pump
- Ball, seat, and spring available in different materials
- Low pulsation
- Material-conveying parts made completely of stainless steel
- Surge tank optionally available
- Option of attaching fluid pressure regulator
- Optional direct filtering of material at the pump outlet

Find out more



MP 560

- Double diaphragm pump
- Ball, seat, and spring available in different materials
- Low pulsation
- Surge tank optionally available
- Option of attaching fluid pressure regulator
- Optional direct filtering of material at the pump outlet

Find out more



Pumps

Find out more

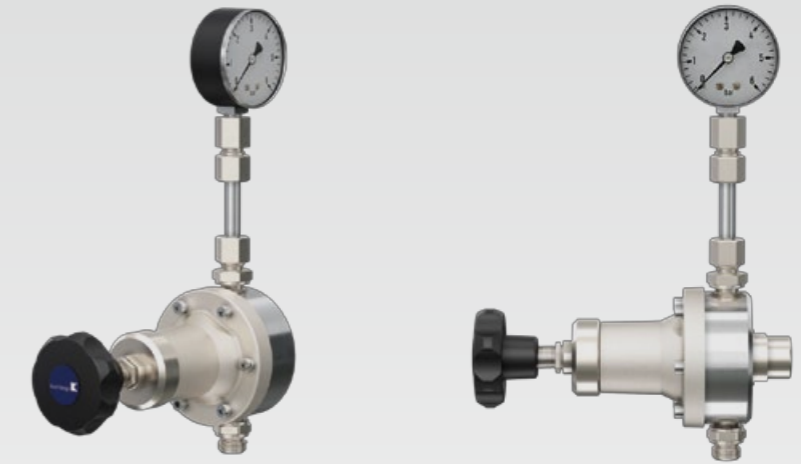


Piston pumps

- Pneumatically operated high-pressure piston pumps
- Suitable for high-pressure and airless applications
- Various ratios available
- Various pressure ranges can be selected
- Material-conveying stainless steel parts

Fluid pressure regulators / Fluid back pressure regulators

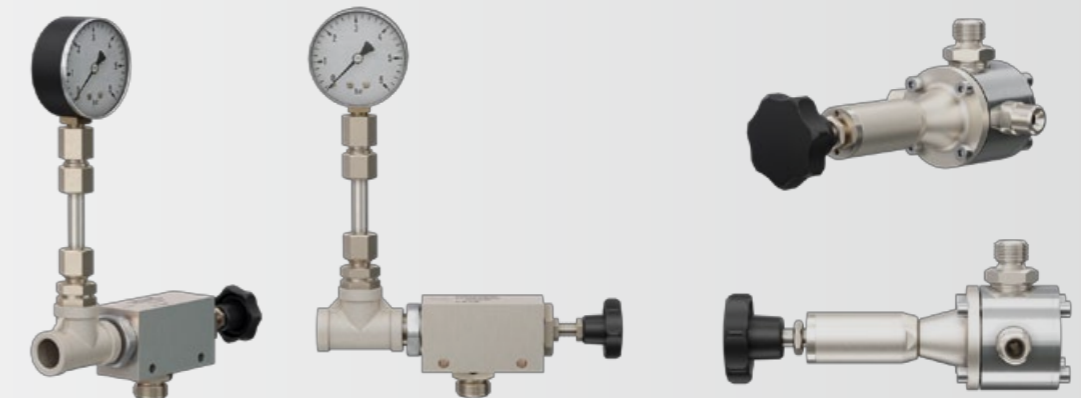
Find out more



Fluid pressure regulators

- Manually or pneumatically controlled version available
- Available with stainless steel or hard metal valve seats
- Various pressure ranges available
- Various pressure gauges available
- A range of connections can be selected
- Selected versions available with ceramic valve seats

Find out more



Fluid back pressure regulators

- Manually or pneumatically controlled version available
- Available with stainless steel or hard metal valve seats
- Various pressure ranges available
- Various pressure gauges available
- A range of connections can be selected



Glaze spraying stand

- Different sizes available
- Equipped with collecting pan and grating cover as standard
- Alternatively available with baffle plates before filtering
- Various turntables and lighting available
- Various dry filters available
- Optional extraction fan with different output levels available

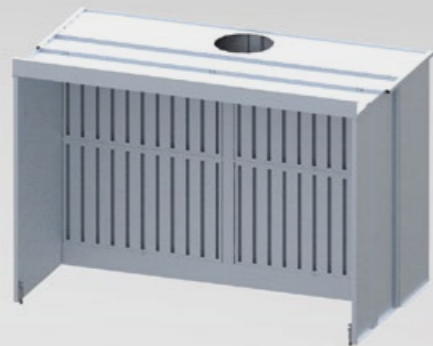
[Find out more](#)



Mini spray stand

- Suitable for coating small parts
- Extraction system attached and optional integration of a base frame
- ATEX design possible

[Find out more](#)



Spray booths

- Solid sheet metal construction
- Fitted with roof and side components
- Side parts may be flexible
- Optional extraction fan with various attachment options
- ATEX design possible
- Various dry filters available

[Find out more](#)



Spray stands

- Different sizes available
- Lighting available
- Various dry filters available
- Optional extraction fan with different output levels available
- ATEX design possible

[Find out more](#)



Spraying walls

- Solid sheet metal construction
- Optional extraction fan with various attachment options
- Galvanised or stainless steel design
- Various dry filters available
- ATEX design possible

[Find out more](#)



Water-flooded spray booths and spray stands

- Different variants and sizes available
- Available as a spray booth or spraying wall design
- Underfloor design
- Binds overspray in water

[Find out more](#)



BasicLINE
CLASSIC | PRACTICAL | SMART

Material nozzles and air nozzles



BasicLINE material nozzles and air nozzles

Choose the right solution for your application from a range of air and material nozzles. We offer a wide variety of different jet types to apply your medium precisely and efficiently.

Krautzberger offers you a wide range of different material nozzles and air nozzles for your application. Whether conventional, HVLP or airless, you will find your desired air and material nozzle among our range. Thanks to different geometries, shapes and diameters, we offer the material-appropriate solution for your application.

Examples of different jet types include:

- Flat jet atomisation
- Round jet atomisation
- Rotary jet atomisation
- Full-cone rotary jet atomisation
- Hollow-cone rotary jet atomisation

Thanks to different geometries and jet types, Krautzberger is able to offer you a wide range of products at all times. All material nozzles are available in stainless steel, hardened stainless steel or in hard metal. Depending on the product, our air nozzles are available in nickel-plated brass and in stainless steel. This diversity ensures you have a wide range of material nozzles and air nozzles.

- BasicLINE air nozzles - conventional & HVLP
- BasicLINE material nozzles - conventional & HVLP
- Airless nozzles
- DUO nozzles

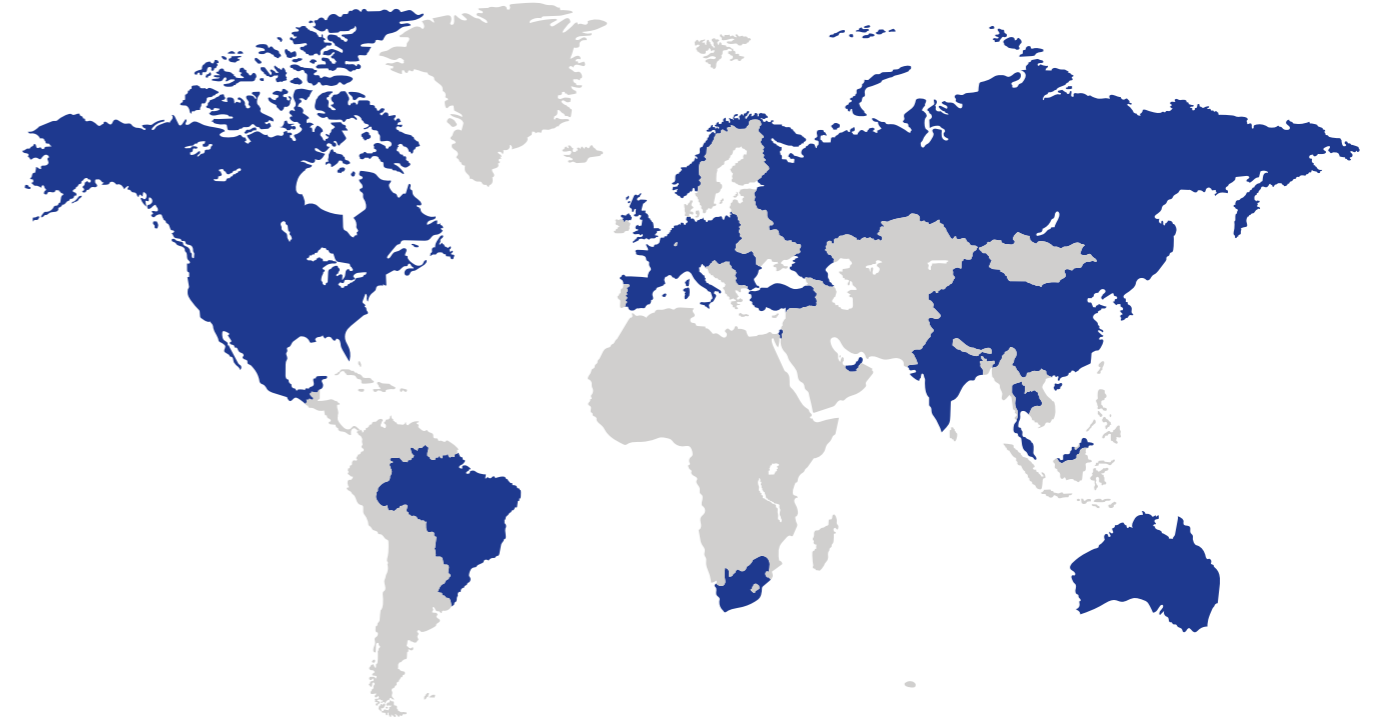
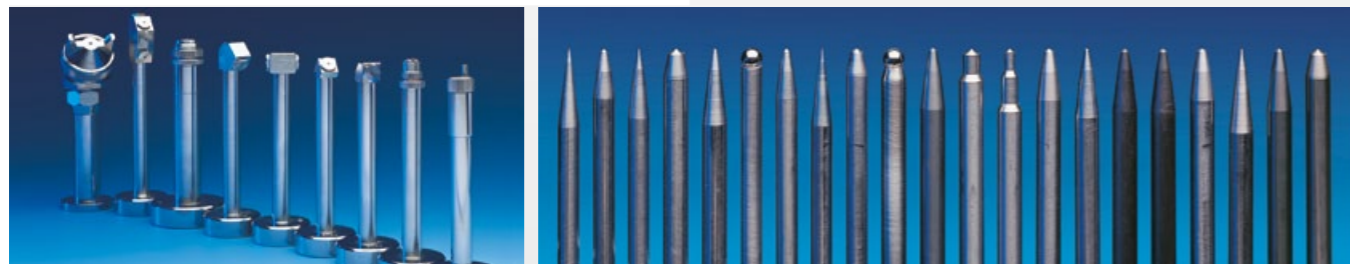
Accessories

Krautzberger offers a broad portfolio of accessories for every BasicLine product category.

These include:

- Cups
- Rotary joints
- Material nozzles and air nozzles
- Material needles
- Agitators and agitator impellers
- Hoses and hose packages
- Extensions

Find out more



Outside sales consultants and partners worldwide

We advise companies from over 60 countries across the globe on all aspects of surface technology. Our global partner network allows us to offer our customers competent and high-quality advice locally.

Current contact details and addresses can be found on our homepage:

www.krautzberger.com/kontakt

We look forward to hearing from you!



Find out who to contact



www.krautzberger.com

Krautzberger 

Krautzberger GmbH Stockbornstraße 13 D-65343 Eltville am Rhein

Phone: +49(0)6123 698-0 Fax: +49(0)6123 698-200

mail@krautzberger.com